

DEPARTMENT OF ENVIRONMENTAL HEALTH

INFORMATION SESSION WEBINAR
MARCH 1, 2016



EMORY

ROLLINS
SCHOOL OF
PUBLIC
HEALTH

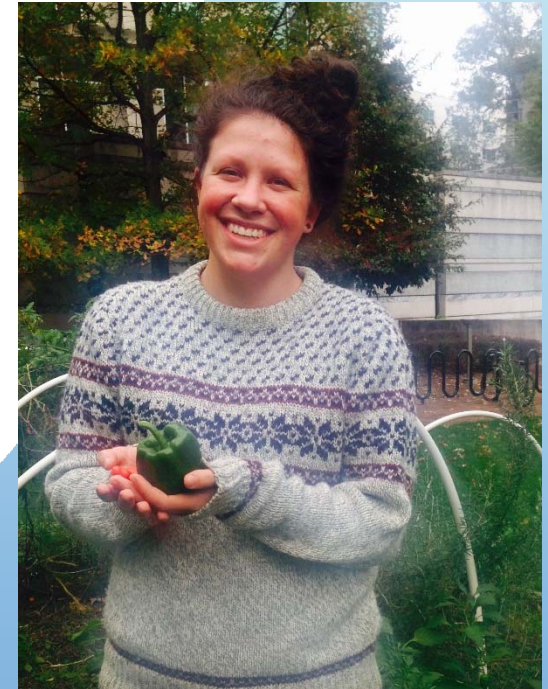
INTRODUCTIONS



Karen Levy, PhD
Assistant Professor



Ariadne Swichtenberg
Associate Director of
Academic Programs (ADAP)



Grete Wilt
2nd year GEH MPH Student

EH DEPARTMENT OVERVIEW

- THE EMORY DEPARTMENT OF ENVIRONMENTAL HEALTH EXPLORES HOW HUMAN HEALTH IS INFLUENCED BY OUR INTERACTIONS WITH THE ENVIRONMENT.
- THIS INCLUDES EVERYTHING FROM CHEMICAL AND MICROBIAL CONTAMINATION OF AIR, WATER, AND OTHER MEDIA TO URBAN SPRAWL AND CLIMATE CHANGE.

EH DEPARTMENT GOALS

- Our ultimate goal is *to promote a healthy environment for all people.*
- We prepare students to tackle challenges of the future, e.g.,:
 - understanding interactions of exposures with human genome
 - projecting impacts of climate and other global changes
 - promoting sustainable stewardship of resources, e.g., ensuring safe air and water
- Expansive view of environmental health rather than narrow subspecialty.

FACULTY, RESEARCH, AND STUDENT OPPORTUNITIES



DIVERSE FACULTY

- OUR FACULTY HAVE PHDS IN:
 - ENVIRONMENTAL HEALTH
 - ENVIRONMENTAL SCIENCE
 - ENVIRONMENTAL ENGINEERING
 - EPIDEMIOLOGY
 - BIOLOGY
 - CHEMISTRY
 - MEDICINE (MD)
 - LAW (JD)
- MOST HAVE JOINT APPOINTMENTS



RESEARCH AREAS

PESTICIDES AND INDUSTRIAL CONTAMINANTS

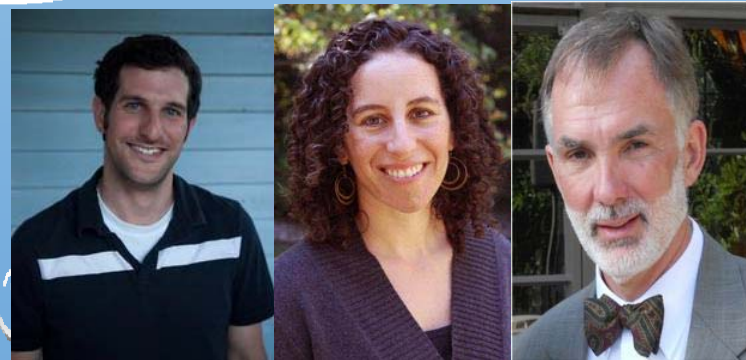


AIR POLLUTION AND GLOBAL CLIMATE CHANGE



WATER, SANITATION, & HYGIENE (WASH)

INFECTIOUS DISEASE ECOLOGY



RESEARCH AREAS

- AIR AND WATER POLLUTION
- INFECTIOUS DISEASE ECOLOGY
- PESTICIDES
- WATER, SANITATION, AND HYGIENE (WASH)
- NEUROLOGIC OUTCOMES
- ENDOCRINE DISRUPTORS
- GENE-ENVIRONMENT INTERACTIONS
- BUILT ENVIRONMENT
- GLOBAL CLIMATE CHANGE

PARTNERSHIPS

- CENTERS FOR DISEASE CONTROL AND PREVENTION (CDC)
 - NATIONAL CENTER FOR ENVIRONMENTAL HEALTH
 - AGENCY FOR TOXIC SUBSTANCES AND DISEASE REGISTRY (ATSDR)
 - NATIONAL INSTITUTE FOR OCCUPATIONAL SAFETY AND HEALTH (NIOSH)
- ENVIRONMENTAL PROTECTION AGENCY
- AMERICAN CANCER SOCIETY
- GEORGIA DIVISION OF PUBLIC HEALTH
- GEORGIA ENVIRONMENTAL PROTECTION DIVISION

ACADEMIC OVERVIEW

- DEGREES & PROGRAMS
- PRE-REQUISITES
- CURRICULUM
- PRACTICUMS & INTERNSHIPS
- THESIS & CAPSTONE
- Q&A

DEGREES OFFERED

- ENVIRONMENTAL HEALTH (MPH)
- GLOBAL ENVIRONMENTAL HEALTH (MPH)
- ENVIRONMENTAL HEALTH-EPIDEMIOLOGY (MSPH)
- 5-YEAR PROGRAM FOR BS ENVIRONMENTAL SCIENCE AND ENVIRONMENTAL HEALTH (MPH)
- DUAL-DEGREES WITH MPH INCLUDE: MD, MBA, JD, MSN, AND MMSC (PHYSICIAN ASSISTANT)
- PHD IN ENVIRONMENTAL HEALTH SCIENCES
- WWW.SPH.EMORY.EDU/DEPARTMENTS/EH/DEGREE-PROGRAMS/INDEX.HTML

GAIN SKILLS IN

- HAZARD RECOGNITION AND CONTROL
- RISK ASSESSMENT
- ENVIRONMENTAL POLICY
- EPIDEMIOLOGY
- TOXICOLOGY
- PROGRAM IMPLEMENTATION AND EVALUATION
- ECOLOGY, DEMOGRAPHY, AND ENVIRONMENTAL SCIENCE

PREREQUISITES

COURSE WORK:

- REQUIRED: CHEMISTRY, BIOLOGY
- RECOMMENDED: CALCULUS, STATISTICS, ORGANIC CHEMISTRY, PHYSIOLOGY
- GLOBAL ENVIRONMENTAL HEALTH APPLICANTS:
 - GLOBAL EXPERIENCE



CURRICULUM

STUDENTS MUST COMPLETE:

1. COURSE WORK:

- MPH: 42 HOURS
- MSPH: 48 HOURS
- DUAL-DEGREES: 32 HOURS IN RSPH;
10 SHARED FROM OTHER PROGRAM
- EH COURSES AND SAMPLE SYLLABI:

WWW.SPH.EMORY.EDU/ACADEMICS/COURSES/EH-COURSES/INDEX.HTML

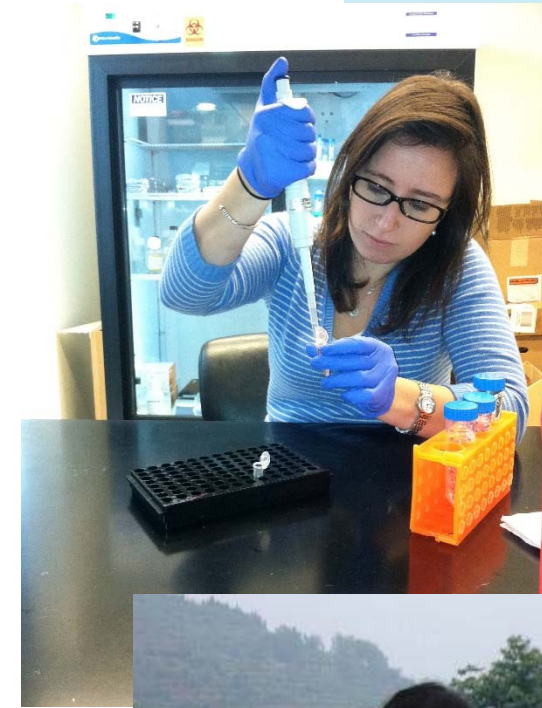
2. PRACTICUM

3. CULMINATING EXPERIENCE



PRACTICUM

- 200-400 HOURS
- PAID OR UNPAID
- WIDE-RANGE OF OPPORTUNITIES
- RESOURCES
 - RSPH CAREER SERVICES
 - ROLLINS OPPORTUNITY LINK
 - PUBLIC HEALTH EMPLOYMENT CONNECTION
 - LISTSERVS
 - FACULTY
 - PRACTICUM FAIRS
 - NETWORKING, ETC.



CULMINATING EXPERIENCE

- THESIS OR CAPSTONE (THESIS FOR MSPH)
- CULMINATION OF WHAT YOU HAVE LEARNED IN THE CLASSROOM
- OFTEN PART OF PRACTICUM EXPERIENCE
- ROLLINS FACULTY SERVE AS ADVISORS

SUPPORT & ADVISING

- ALL INCOMING STUDENTS ARE ASSIGNED
 - EH FACULTY ADVISOR
 - ASSOCIATE DIRECTOR OF ACADEMIC PROGRAMS (ADAP)

PRACTICUM EXAMPLES

CENTER FOR GLOBAL SAFE WASH

- COMMUNITY MAPPING TO ESTABLISH THE SIZE, POPULATION, AND PERCENT COVERAGE FOR TYPES OF SANITATION IN 6 COMMUNITIES

NATIONAL CENTER FOR ENVIRONMENTAL HEALTH

- PUBLIC HEALTH CONSEQUENCES OF DISASTERS

ENVIRONMENT AND POPULATION RESEARCH CENTER

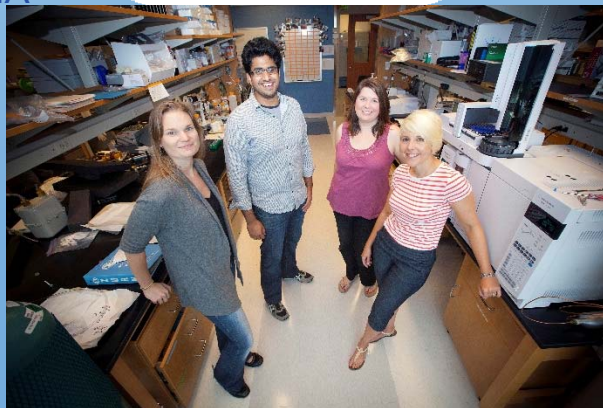
- PESTICIDES AND SAFE PRACTICES AMONG FARMERS IN RURAL BANGLADESH

ENVIRONMENTAL PROTECTION AGENCY, REGION IV

- CLIMATE CHANGE INFORMATION CLEARINGHOUSE

YOUTH FOR UNITY AND VOLUNTARY ACTION

- AIR QUALITY IN INDIA



FUNDING OPPORTUNITIES

Merit Scholarship

<http://sph.emory.edu/admissions/tuition/ways-to-pay/scholarships/index.html>

PH Mission Driven Scholarships

<http://sph.emory.edu/admissions/tuition/ways-to-pay/mission-driven-aid/index.html>

Financial Aid Award

<http://sph.emory.edu/admissions/tuition/applying-for-aid/index.html>

Rollins Earn & Learn (REAL) Award

<http://sph.emory.edu/rollins-life/community-engaged-learning/real/index.html>

Global Field Experience (GFE) Award

<http://www.sph.emory.edu/rollins-life/community-engaged-learning/global-field-experience/index.html>

Global Health Institute (GHI) Award

http://www.globalhealth.emory.edu/what/student_programs/student_funding_opportunities/multidisciplinry.html

Environmental Health Specific Opportunities

via EH-related organizations like EPA, National Science Foundation, U.S. Dept. of Energy

CAMPUS ORGANIZATIONS

- CLIMATE@EMORY
- ROLLINS ENVIRONMENTAL HEALTH ACTION COMMITTEE (REHAC)
- ROLLINS STUDENT GOVERNMENT ASSOCIATION
- EMORY GLOBAL HEALTH ORGANIZATION (EGHO)
- CENTER FOR GLOBAL SAFE WASH
- EMORY'S OFFICE OF SUSTAINABILITY INITIATIVES
- GRADUATE SUSTAINABILITY GROUP



Community Art Projects

MORE STUDENT LIFE

- ROLLINS OUTDOOR CLUB
- EDUCATIONAL GARDEN PROJECT
- GLOBAL GROWERS
- BIKE EMORY AND SPOKES COUNCIL
- OPPORTUNITIES TO START YOUR OWN CLUBS
- EMORY INTRAMURALS (INNER TUBE WATER POLO, SOCCER)
- FUN FESTIVALS IN ATLANTA (LANTERN PARADE, MUSIC FESTIVALS)
- ATLANTA BELTLINE (SUSTAINABLE REDEVELOPMENT PROJECT WITH PARKS/TRAILS)
- GREAT HIKING IN NORTHERN GEORGIA (START OF THE APPALACHIAN TRAIL)
- BEACHES ACCESSIBLE WITHIN 4 HOUR DRIVE

QUESTIONS?



ARIADNE SWICHTENBERG: ASCARL@EMORY.EDU