

ROLLINS LIFE

PROMOTING HEALTH, PREVENTING DISEASE



EMORY

ROLLINS
SCHOOL OF
PUBLIC
HEALTH

**PATHWAYS
TO PUBLIC HEALTH**

2020 - 2021 ADMISSIONS GUIDE

There has never been a more exciting or challenging time to enter the field of public health. The Rollins School of Public Health at Emory University is preparing students to meet these challenges in an environment unique among schools of public health. We welcome applications from individuals interested in combining academic training and knowledge with a commitment to solving the world's health problems.

James W. Curran, MD, MPH

James W. Curran Dean of Public Health

A photograph of James W. Curran, MD, MPH, sitting on a staircase in a server room. He is wearing a light blue dress shirt and a red and blue striped tie. He is smiling and has his hands clasped in his lap. The background consists of rows of server racks with glowing lights. A large blue diagonal graphic is overlaid on the right side of the image.

**WELCOME
TO ROLLINS**

CONTENTS

| | | | |
|--|--------------------|---|--------------------|
| The Rollins Experience..... | 4 | Executive MPH (EMPH) | 14 |
| What You Can Do at Rollins | 6 | Global Health (GH)..... | 15 |
| Behavioral, Social and Health Education Sciences (BSHES)..... | 10 | Health Policy and Management (HPM)..... | 16 |
| Biostatistics and Bioinformatics (BIOS)..... | 11 | Making Career Connections..... | 17 |
| Environmental Health (EH) | 12 | Places to Work in Atlanta | 19 |
| Epidemiology (EPI)..... | 13 | Admission + Tuition | 21 |
| | | Financial Aid | 23 |



THE ROLLINS EXPERIENCE

COLLABORATE.

Our students collaborate with faculty and students across Emory University, as well as with leading experts at the Centers for Disease Control and Prevention (CDC) and other global, state, and local public health agencies. Rollins is an integral part of Emory's Woodruff Health Sciences Center, which offers research and training opportunities in medicine, nursing, and allied health.

RESEARCH.


Rollins is home to an internationally renowned [Office of Research](#), which includes 26 centers of research. Our faculty, staff, and students are engaged in a wide variety of exciting projects that have a major impact on local, national, and international public health. We have a large and comprehensive research portfolio (more than \$70,000,000 annually), with faculty receiving funding from a wide range of federal and non-federal sources—Rollins ranks #5 in National Institutes of Health funding among other schools of public health. **Research areas of distinction include:** HIV/AIDS, safe water and sanitation, air pollution, mental health, cancer prevention, diabetes and obesity, cardiovascular epidemiology, reproductive health, nutrition, tobacco control, public health informatics and biomedical statistics, vaccines and antibiotic resistance, emergency preparedness, health disparities, substance abuse, adolescent health, and health services and policy.

In addition to Rollins' [26 centers of research](#), the school also works with several programs and institutes that address global public health issues including:

Emory AIDS International Training and Research Program
Emory Global Health Institute
Emory Global Health Institute China Tobacco Partnership
Food Fortification Initiative
Leon Research Group

Programs, Research, and Innovation in Sexual Minority Health
Rwanda Zambia HIV Research Group
Surveillance, Epidemiology, and End Results Program
The Task Force for Global Health
Winship Cancer Institute

[The Center for Global Safe Water, Sanitation, and Hygiene \(CGSW\)](#) has earned a global reputation for its pioneering work. The center was the first WASH center established at a U.S. university, and Rollins was the first school in the country to offer a graduate certificate in WASH to MPH/MSPH students.

 Visit sph.emory.edu/rollins-life to learn about Community Engaged Learning.

EXPLORE.

The Rollins experience takes students beyond the classroom. Open to all Rollins MPH and MSPH students, the [Global Field Experience \(GFE\)](#) program allows students to apply the knowledge they have learned in the classroom to low-resource or high-disparity settings around the globe. Our students have traveled to more than 70 countries worldwide through various GFE programs. Students not only gain invaluable experiences, but can also use their GFE to fulfill applied practice experience requirements or to serve as the topic of their thesis or capstone projects.

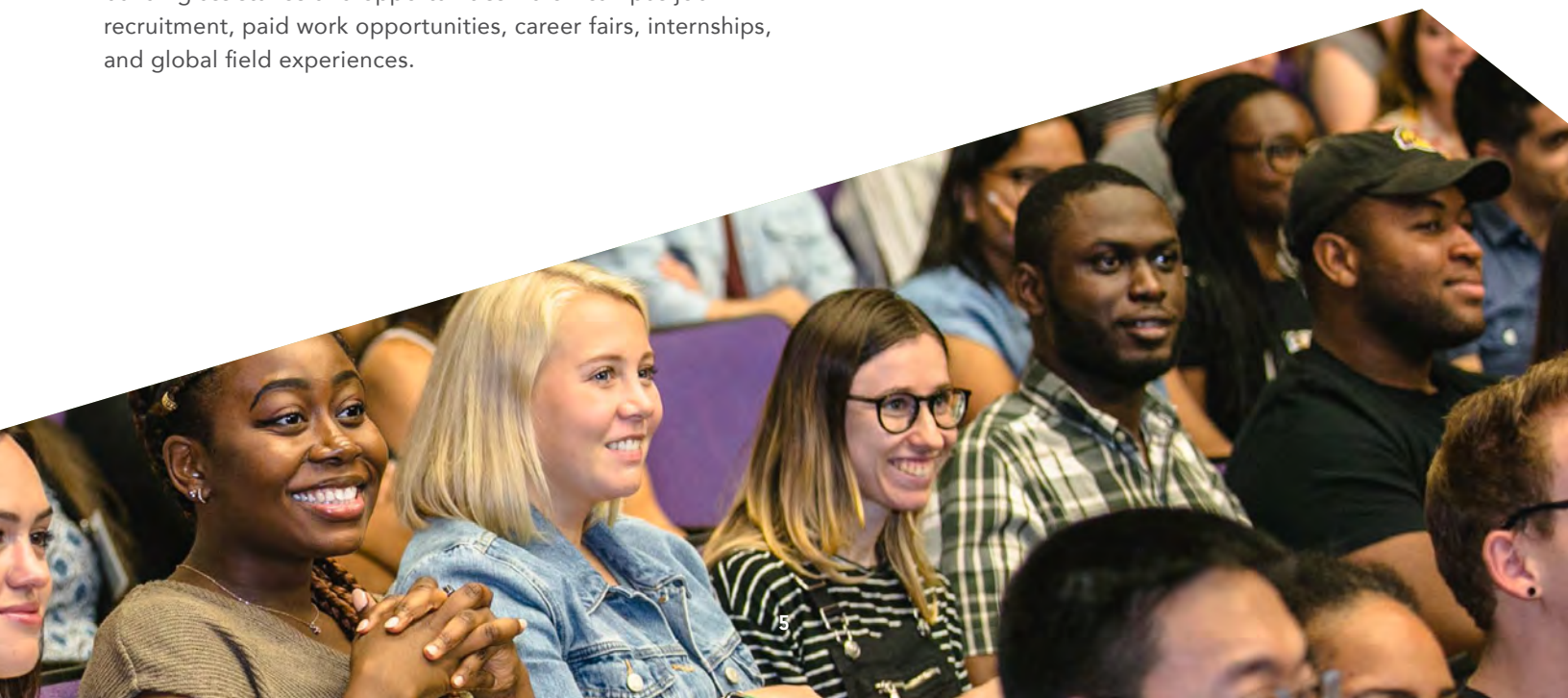
To learn more about the Rollins experience, explore the [Student Ambassadors blog](#) to hear from current and former students. Visit sph.emory.edu/rollins-life/atlanta to learn about student engagement at Rollins and in Atlanta, Georgia.

NETWORK.

Rollins is at the epicenter of public health in Atlanta and the nation. The proximity of the school and its faculty to the CDC as well as CARE, the American Cancer Society, The Carter Center, the Task Force for Global Health, the Arthritis Foundation, and state and local health agencies offers students a wealth of opportunities for practical experience, learning, and mentoring before graduation.

The Office of Career Development at Rollins works closely with students to provide career guidance, job-seeking tools, and support throughout their graduate degree journey. Our valuable career services program provides students career building assistance and opportunities via on-campus job recruitment, paid work opportunities, career fairs, internships, and global field experiences.

Attending Rollins provides students access to a global network of alumni from all 50 states and more than 90 nations who share a passion for public health, as well as links to organizations and research projects around the world.



WHAT YOU CAN DO AT ROLLINS

WORK.


Rollins students don't just learn from their professors in the classroom, they work alongside them as colleagues and research assistants.

More than 180 full-time, doctoral-level faculty members teach and conduct research in areas such as mathematical modeling of infectious disease transmission, nutrition and chronic disease, and cancer causation and control.

ROLLINS EARN AND LEARN (REAL) PROGRAM. Students earn income and gain valuable skills by working with federal, state, and county agencies; Emory-affiliated programs; and local nonprofit organizations. The REAL program partners with various employers to provide paid, skills-based, and applied work experiences for full-time master's students. In the past year alone, our employer partnerships resulted in more than 550 student hires during the academic year.

LEARN.

Rollins offers a wide breadth and depth of courses and degree programs that speak to a range of interests. Students interested in further specialization can add a certificate or pursue a dual degree. They can gain specialized skills by completing one of several certificate programs and crossing disciplines to take elective classes in Emory's other graduate schools. These options are covered under Emory's flat-tuition rate. Nearly any public health-related topic can be found through our [degree programs](#), distance learning, and more.



PUTTING STUDENTS FIRST is priority for researcher and award-winning Associate Professor of Global Health **Juan Leon**. "He's really invested in his students' professional development," says **Michael Garber PH '13**, who led Leon's rotavirus and nutrition team in Bolivia during his second year at Rollins. "For all of his students, Juan holds an annual career planning meeting where he gets you to think about what you want out of life and how you're going to get it."

In addition to his students at Rollins, Leon's work has affected students on a global level. The World Health Organization recommended that the rotavirus vaccine be included in national childhood immunization programs. The vaccine protects young children from a highly contagious, potentially lethal virus that causes severe diarrhea. But it has proved less effective in developing countries like Bolivia. Leon believes that malnutrition may hold the key to improving vaccine response. Leon studies the immune response to pathogens that cause foodborne and waterborne diseases.

PROGRAMS

- [Master's Degree](#)
- [Dual Degree](#)
- [Doctoral*](#)
- [Certificates](#)
- [Professional Development](#)

BACHELOR'S/MASTER'S PROGRAMS

- [BA or BS/MSPH: Bachelor of Science/Master of Science in Public Health \(Biostatistics\)](#)
- [BS/MPH: Bachelor of Science/Master of Public Health \(Environmental Studies and Environmental Health\)](#)

ACADEMIC DEPARTMENTS

- Behavioral, Social, and Health Education Sciences
- Biostatistics and Bioinformatics
- Gangarosa Department of Environmental Health
- Epidemiology
- Executive MPH
- Health Policy and Management
- Hubert Department of Global Health

* Offered through the Laney Graduate School

WHY CHOOSE ROLLINS?

"You can learn about public health anywhere. But if you want to do public health, you come to Rollins."

— Kristin Unzicker PH '02, director of academic programs & faculty development, Emory School of Medicine

SOLVE.

Help make the world a better place by solving real-world problems. Rollins research studies are routinely a part of headline news due to their part in groundbreaking findings and public health initiatives. Within each of Rollins' academic departments, research plays an integral role. With faculty members leading various research initiatives, students are provided unique opportunities for learning in their areas of study.

HERE'S A SAMPLE OF STUDY TOPICS THAT STUDENTS WILL FIND AT ROLLINS:

- Aging
- Behavioral and Social Epidemiology
- Chronic Diseases: Cancer, Cardiovascular Disease, Diabetes, Obesity
- Climate Change
- COVID-19
- Environmental Hazards: Toxicology, Air Quality,
- Ethics and Public Health
- Gender, Sexuality, and Health
- Genetics/Genomics
- Global Complex Humanitarian Emergencies
- Health Communications: Social Marketing, Mass Media, Health Literacy
- Health Disparities: Race/Ethnicity, Social Class, Access to Care
- Health Economics and Finance
- Health and Human Rights
- HIV/AIDS
- Infectious Diseases: Tuberculosis, Vaccines, Food and Waterborne Diseases
- Informatics
- Injuries and Violence
- Maternal and Child Health: Adolescent Health, Reproductive Epidemiology, Mother and Child Health and Nutrition
- Mental Health: Substance Abuse, Mental Health Policy, Mental Health/Medical Interface
- Nutrition
- Parasitic Diseases
- Public Health Policy and Law
- Public Health Preparedness and Bioterrorism
- Religion and Health
- Reproductive Health/Women's Health
- Water Safety and Quality


 Visit publichealthmagazine.emory.edu to learn more about Rollins' impact and involvement in various public health issues.

WHAT YOU CAN DO AT ROLLINS

JOIN.

At Rollins, student life is part of the learning experience. The student body at Rollins is diverse, and made richer by the 200-plus international students who study here each year. Representing more than 50 countries, these students add a global dimension to classroom discussions that exemplifies what public health is all about.

We promote an inclusive environment of innovation and diversity. Our students are highly engaged, not just in the classroom, but through student organizations. There are **20 Rollins student organizations and multiple programs** dedicated to connecting students with communities, resources, and support services that help to enhance their student life experience.

 Visit sph.emory.edu/rollins-life/orgs to learn more about student organizations.

BEHAVIORAL, SOCIAL, AND HEALTH EDUCATION SCIENCES

THE DEPARTMENT OF BEHAVIORAL, SOCIAL, AND HEALTH EDUCATION SCIENCES explores how biological, behavioral, social, cultural, and historical factors converge to affect the health and well-being of populations. MPH students have many opportunities to work with faculty mentors on projects aimed at understanding and changing behaviors that put health at risk. They collaborate with practitioners and researchers to address HIV/AIDS and other infectious diseases, cancer, alcohol and drug abuse, tobacco use, mental health, violence toward women and youth, and chronic conditions such as diabetes and obesity.



MERON ASFAHA
MPH '19 (BSHES, Certificate in Maternal and Child Health)

“ As a Rollins student, I’m challenged in so many different ways. Not just socially or how I think, but in the ways that I think. I feel like I have the tools now to really think critically about public health issues that I may have overlooked before.”

i Visit the BSHES webpage to learn more; sph.emory.edu/bshes

DEGREE PROGRAMS:

MPH in Behavioral, Social, and Health Education Sciences
PhD in Behavioral, Social, and Health Education Sciences*
Dual Degrees

*Offered through Laney Graduate School

WHERE GRADUATES WORK:

Boys & Girls Clubs of America
Centers for Disease Control and Prevention
Evolent Health
Kaiser Permanente
Northrop Grumman

ALUMNI JOB TITLES:

Global Water Initiative Communications Officer, CARE
Health Educator, Healthy Futures of Texas

BIostatistics AND Bioinformatics

SCIENTISTS IN DIFFERENT DISCIPLINES RELY ON BIostatistics to help solve pressing problems in the biological and health sciences. The application of statistical methods and analyses enables them to design and carry out research trials more effectively and interpret vast amounts of data more precisely to inform health care and public health decisions. Demand for workers with these skills is so great that Fortune magazine recently ranked the master's in biostatistics degree as the No.1 degree for landing a well-paying, satisfying job. Rollins' BIOS department is centered around methodological research, theory, collaborative research, and consulting. Students learn to map the links between statistics, technology, and health using scenarios that range in focus from a single gene to individual patients to satellite images.



ALLYSON MATEJA
MSPH '19

“ Part of why I like Rollins and my core classes is that we're really able to understand the baseline public health information that we can convey along with the data. In other words, it's not just like, 'here's a recommendation,' it's 'here's a recommendation based on data and here's the exact reasons and numbers and the actual difference you can make.'”

i Visit the BIOS webpage to learn more; sph.emory.edu/bios

DEGREE PROGRAMS:

- BA or BS/MSPH in Biostatistics
- MPH in Biostatistics
- MSPH in Biostatistics
- PhD in Biostatistics*

* Offered through Laney Graduate School

WHERE GRADUATES WORK:

- Booz Allen Hamilton
- Centers for Disease Control and Prevention
- Clinical Trials & Surveys Corp
- Epic Systems Corporation
- Winship Cancer Institute

ALUMNI JOB TITLES:

- Associate Statistical Modeler
- Data Analyst II, IHRC, Inc.


GANGAROSA DEPARTMENT OF ENVIRONMENTAL HEALTH

THE GANGAROSA DEPARTMENT OF ENVIRONMENTAL HEALTH (EH) explores how human health is influenced by our interactions with the environment. The department promotes human health by advancing understanding of these relationships and working to ensure a healthy, sustainable environment for all. Its perspective is expansive, from molecular to planetary in focus and from local to global in scale. Faculty apply tools in risk assessment, epidemiology, toxicology, analytic chemistry, microbiology, remote sensing, ecology, environmental policy, program evaluation, and environmental sciences to critical environmental health challenges in their research and teaching. Environmental health students learn how to apply scientific skills to better understand the dynamic relationships between human health and the environment.



MIRANDA MITCHELL
BS/MPH '19

“The ability to get field, lab, and analysis experience is so unique to Rollins.”

 Visit the EH webpage to learn more; sph.emory.edu/eh

DEGREE PROGRAMS:

MPH in Environmental Health
 MPH in Global Environmental Health
 BS/MPH in Environmental Studies and Environmental Health
 MPH in Environmental Health and Epidemiology
 PhD in Environmental Health Sciences*
 Dual Degrees

*Offered through Laney Graduate School

WHERE GRADUATES WORK:


Food and Drug Administration
 Centers for Disease Control and Prevention
 Environmental Protection Agency
 CARE
 State Departments of Public Health

ALUMNI JOB TITLES:

Environmental Health Fellow, ASPPH/EPA
 Public Health Associate, CDC


EPIDEMIOLOGY

THE DEPARTMENT OF EPIDEMIOLOGY is composed of an active community of researchers and public health practitioners who specialize in infectious diseases, public health preparedness, cancer, cardiovascular disease, maternal and child health, and epidemiologic methods. Students of epidemiology learn how to apply quantitative science to study disease distribution among populations and evaluate the impact of interventions for treatment and prevention. Students may choose from degree options (MPH and MSPH) in epidemiology or global epidemiology. All receive a strong foundation in epidemiologic and quantitative methods and build robust experiences beyond the classroom, drawing on department, university, and Atlanta resources.

 Visit the EPI webpage to learn more; sph.emory.edu/epi



SUSANA TROST
MPH '19

 *The level of collaboration with the CDC is really unique to Rollins. We're learning from the people who are actually working on outbreaks and building future connections."*

DEGREE PROGRAMS:

MPH in Epidemiology
MPH in Global Epidemiology
MSPH in Epidemiology
MSPH in Global Epidemiology
PhD in Epidemiology*
Dual Degrees

*Offered through Laney Graduate School

WHERE GRADUATES WORK:

American Cancer Society
Children's Healthcare of Atlanta
EcoHealth Alliance
Georgia Division of Family and Children Services
ICF International

ALUMNI JOB TITLES:

CDC / CSTE Applied Epidemiology Fellow,
Florida Department of Health
Epidemiologist Specialist II,
Arizona Department of Health Services

EXECUTIVE MPH

BY DAY, THEY ARE STATE AND COUNTY HEALTH

DIRECTORS, food inspectors, music therapists, pharmacologists, nurses and physicians, and more. By night and on weekends, they are students in the Executive Master of Public Health (EMPH) program, Rollins' distance-learning option for working professionals. Students take core courses in biostatistics, epidemiology, health care policy, environmental health, global health, and behavioral sciences in addition to course work in **one of three specialty areas**:

APPLIED EPIDEMIOLOGY Improving public health practice by advancing knowledge about the causes of disease, tracking diseases and disease indicators, and applying epidemiological methods in the field.

APPLIED PUBLIC HEALTH INFORMATICS Linking public health practice with the application of technology and providing leadership to ensure the successful use of technology to support response, research, and programmatic goals and outcomes.

PREVENTION SCIENCE Using health education, research design, health communication, and evaluation skills to plan, implement, and evaluate community interventions and communicate health and behavioral information.



RODNEY GOODIE, MBA
MPH '19, Prevention Science Track
President/CEO, St. Hope Foundation

“The program elevated my thinking. Rather than being reactionary to the daily management issues, I would say, ‘let’s think of this in a different way.’”

 Visit the EMPH webpage to learn more;
sph.emory.edu/emph

WHERE GRADUATES WORK:

Booz Allen Hamilton
Emory Healthcare
NYC Department of Health and Mental Hygiene
Summit Medical Group
U.S. Food and Drug Administration

ALUMNI JOB TITLES:

Public Health Advisor, CDC
Senior Program Associate, Emory University

EXECUTIVE MPH students complete a applied practice experience and a culminating experience, which may take different forms—an original quantitative or qualitative research study, secondary data analysis, program evaluation, needs assessment, curriculum development, policy brief, grant proposal, financial assessment, substantive analysis of a body of literature, program design and/or implementation, or development of an approach or methodology to solve a public health informatics issue.

HUBERT DEPARTMENT OF GLOBAL HEALTH

RECOGNIZED AS ONE OF THE BEST DEPARTMENTS OF ITS KIND IN THE NATION, the Hubert Department of Global Health seeks to understand and reduce inequities in health and well-being around the world. **MPH students choose from four areas of study:** infectious diseases, community health and development, public nutrition, or sexual and reproductive health and population studies. The department also offers an accelerated three-semester MPH program for qualified applicants. Through classroom study and global field work, students learn to strengthen the capacities of individuals, families, communities, societies, and governments to identify and reduce barriers to health and wellness. Students in the department are part of the new face of global health, creating healthier communities, researching emerging public health issues, and striving to make health a fundamental human right for all.



THERESA BAILEY
MPH '19, Community Health and Development Track, Certificate in Socio-Contextual Determinants of Health

“...being around people who have been paramount in establishing protocols for the elimination of smallpox, or developed diabetes research that is revolutionizing how people think about chronic disease in India is incredible!”

 Visit the HDGH webpage to learn more; sph.emory.edu/gh

DEGREE PROGRAMS:

- MPH in Global Health
- Accelerated MPH in Global Health
- Dual Degrees

CONTINUING EDUCATION:

The Hubert Department of Global Health periodically offers non-degree, continuing education courses for public health professionals seeking to enhance their knowledge. Courses have included:

- Applied Epidemiology Course
- QUAL-WORKS: Qualitative Research Workshops
- Environmental Microbiology Course

WHERE GRADUATES WORK:

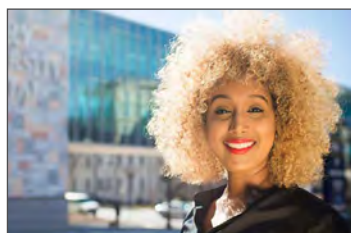
- CARE
- FHI 360
- Ministry of Health
- John Snow, Inc.
- Task Force for Global Health

ALUMNI JOB TITLES:

- Epidemiological Surveillance Officer, World Health Organization
- Program Officer, Bill & Melinda Gates Foundation

HEALTH POLICY AND MANAGEMENT

ROLLINS STUDENTS IN HEALTH POLICY AND MANAGEMENT come from the United States and abroad to gain a strong foundation in health care delivery and financing to address issues in public policy, public health, and health care delivery systems. Interdisciplinary by nature, HPM includes experts in economics, sociology, political science, public policy, health services and policy, general medicine, and psychiatry. Researchers examine specific diseases and conditions such as cancer, obesity, health disparities, access to care, health care costs, maternal and child health, reproductive health, transplantation, health literacy, health care funding, and comparative health systems through quantitative and qualitative evaluation. Students also work with national policy experts and major consulting firms.



ROSA ABRAHA
MPH '19

“ *I learned how to make key connections in law and health and to understand how to use the law as a tool for public health advancement.* **”**

i Visit the HPM webpage to learn more; sph.emory.edu/hpm

DEGREE PROGRAMS:

- MPH in Health Policy
- MPH in Health Care Management
- 12-Month Accelerated MPH in Health Care Management
- MSPH in Health Policy and Health Services Research
- PhD in Health Services Research and Health Policy*
- Dual Degrees

*Offered through Laney Graduate School

WHERE GRADUATES WORK:

- Center for Pan Asian Community Services
- Emory Healthcare
- Georgia Health Policy Center
- Kaiser Permanente
- Mathematica Policy Research

ALUMNI JOB TITLES:

- Health Policy Analyst, U.S. Department of Health and Human Services
- Consultant, Deloitte

MAKING CAREER CONNECTIONS

WHAT CAN I DO WITH MY DEGREE?

A health policy analyst in Washington, D.C., a biostatistician with a medical center in Boston, a health education specialist in Kenya, an emergency preparedness planner in Atlanta. The career opportunities for Rollins graduates are diverse. Graduates work at a wide range of companies, hospitals, organizations, local and state health departments, colleges and universities, private practices, and more.



HEATHER Y. INGOLD,
Programme Manager
Unitaid, a hosted partnership of the
World Health Organization

Guided by the [Office of Career Development](#), students pursue internships, full-time opportunities, applied practice experiences, fellowships, and volunteer work relevant to their interests and goals. Through strong ties with alumni and community partners, Career Development connects students with professionals and organizations in Atlanta and beyond. Rollins has one of the largest public health mentoring programs in the country, [Mentor Rollins](#). Each year, this program matches more than 270 pairs of professionals and students.

Explore the [Graduate Employment Status reports](#) to learn of the organizations, companies, and institutions hiring new Rollins graduates.

“*My MPH gave me the program management skills, epidemiological background, and policy development knowledge that I use in my day-to-day work. Rollins also gave me a big-picture view that’s been crucial for international work. The school’s international flair and vibrant atmosphere prepared me well for my career as a public health professional.*”



WHERE WILL YOUR PUBLIC HEALTH JOURNEY TAKE YOU?

LEARNING BEYOND THE CLASSROOM. Rollins prepares students to change lives through improved health. Students are drawn to the school by the promise of hands-on experience that is relevant to current problems and the opportunity to be part of a community that works together to create solutions. As a first-year student, **Rachel Kane 13PH** worked to develop a food cooperative in nearby Clarkston, Georgia. Her experiences there led to a full-time position that includes managing a weekly farmers market and assessing local food security initiatives to help refugee families thrive. Kane exemplifies community engaged learning at Rollins, which prepares students for careers in community development through service-learning experiences with community organizations throughout the metro-Atlanta region. Along with workshops, discussion, and skill building, community engaged learning helps students work effectively with communities as public health professionals.

WHO HIRES ROLLINS GRADUATES?

- American Cancer Society
- Bill & Melinda Gates Foundation
- Biostatistics Collaboration Core
- California Department of Public Health
- CARE
- The Carter Center
- Centers for Disease Control and Prevention
- Children’s Healthcare of Atlanta
- Council of State and Territorial Epidemiologists
- Deloitte
- Environmental Protection Agency
- Florida Department of Health, Bureau of Epidemiology
- GMHC
- Humana
- IBM Research

- IFC International
- London School of Hygiene & Tropical Medicine
- Medical College of Georgia
- National Committee for Quality Assurance
- National Institutes of Health
- Northrop Grumman
- Oak Ridge Institute for Science and Education
- Office of Inspector General, U.S. Department of Health and Human Services
- PricewaterhouseCoopers LLP
- UNICEF
- United Nations High Commissioner for Refugees
- USAID
- World Health Organization

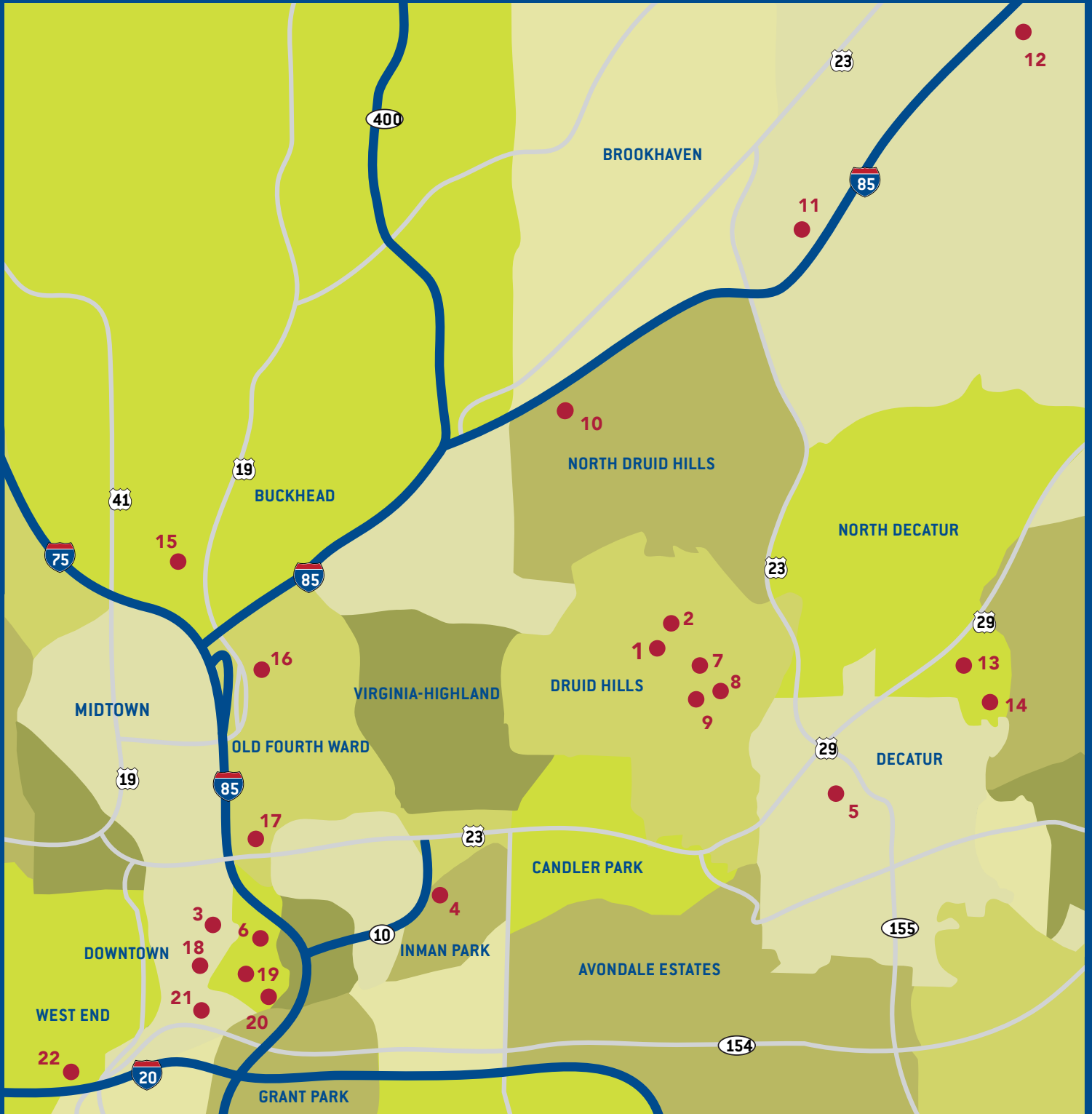
PLACES TO WORK IN ATLANTA

ROLLINS PARTNERS IN ATLANTA

Rollins works closely with a number of agencies in the Atlanta area, providing students with in-person/remote-work and research experiences. The Rollins campus is within walking distance of the CDC and several Emory Healthcare facilities. Other partners, such as The Carter Center, Grady Hospital, and the Georgia Department of Public Health, are within a few miles of Rollins and accessible by car and MARTA bus and rail.

MAP KEY

1. Emory Rollins School of Public Health
2. Centers for Disease Control and Prevention
3. American Cancer Society
4. The Carter Center
5. The Task Force for Global Health
6. CARE
7. Children's Healthcare of Atlanta
8. Winship Cancer Institute
9. Emory University Hospital
10. Emory Orthopaedics & Spine Center
11. U.S. Government Accountability Office
12. Council for State and Territorial Epidemiologists:
National Office
13. DeKalb Medical Center
14. DeKalb County Board of Health
15. Shepherd Center
16. UNICEF: Southeast Regional Office
17. Emory University Hospital Midtown
18. Georgia Department of Public Health
19. Fulton County Department of Health and Wellness
20. Grady Memorial Hospital
21. U.S. Department of Health and Human Services:
Regional Headquarters
22. Morehouse School of Medicine




ADMISSION AND TUITION

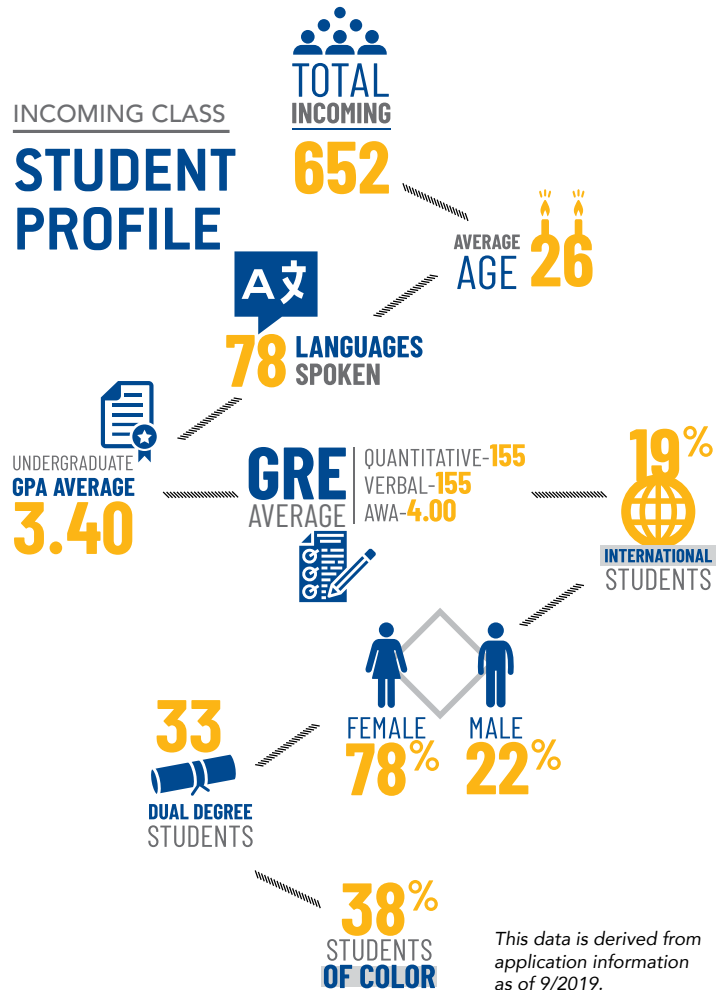
APPLYING TO ROLLINS

Minimum requirements for admission include satisfactory completion of a four-year baccalaureate degree or its equivalent and a strong interest in a public health career. Work or academic experience in the health field is highly desirable but not required. Rollins participates in the SOPHAS common application system for all of its degrees and programs except for doctoral programs.

MPH/MSPH APPLICATION REQUIREMENTS INCLUDE:

- Complete and verified application through SOPHAS at sophas.org
- Transcripts (WES evaluations for international transcripts)
- Two letters of recommendation
- Personal essay
- List of research/work/volunteer/honors experiences
- TOEFL scores (for international applicants)

 Visit sph.emory.edu/apply to learn more about the application requirements.



IMPORTANT DATES FOR 2021

| | |
|------------------------|--|
| October 1, 2020 | Free Application for Federal Student Aid (FAFSA®) open date |
| January 5 | Priority application deadline for merit scholarship consideration (excluding EMPH) |
| February 15 | EMPH priority deadline for merit scholarship consideration |
| May 3 | Preferred last day for international applicants to submit fall 2021 application |

| | |
|-----------------|--|
| June 30 | FAFSA® closes for the 2021-22 academic year |
| July 15 | Preferred last day for all applicants to submit fall 2021 application* |
| August 2 | Fall 2021 application deadline |

*Review the website for the EMPH preferred deadline.

To visit Rollins or connect with us on the road in a city near you, visit sph.emory.edu/admissions/meetus.

TUITION AND FEES

DEGREE PLAN

Four Semester MPH Degree Plan

PER SEMESTER

\$17,920

Three Semester MPH Degree Plan

\$23,900

(Accelerated option for HPM, EPI, Global EPI, and GH only)

Four Semester MSPH Degree Plan

\$20,700

Dual Degree or Accelerated MPH for
External Graduate/Professional Plan

\$27,710

(Two semesters resided in RSPH)

EXECUTIVE MPH DEGREE PLAN

6 Semesters (3 course schedule)

\$11,950

9 Semesters (2 course schedule)

\$1,850 per credit hour

Less than full-time/non-degree tuition

\$2,270 per credit hour

Student Activity Fee

\$97 per semester

Student Recreation and Athletic Fee

\$150 per semester

Mental Health and Counseling Fee

\$91 per semester

First-Time Student Administrative Fee

\$350 *Assessed one time only during a student's first semester of enrollment*

Transcript Fee

\$70 *Assessed one time only during a student's first semester of enrollment*

The above tuition rates and fees are for the 2020–2021 school year and are subject to change for 2021-2022.

 Tuition rates are posted online at sph.emory.edu/tuition.

COST OF ATTENDANCE

Atlanta residents enjoy a lower cost of living than in many other cities. That's one reason why **Naomi Harris PH '14** chose to study behavioral, social, and health education sciences at Rollins. "Rollins gave me more assistance to help fund my degree and offered a lower cost of living than other places I explored for my MPH," says Harris. "The faculty and local alumni have always been extremely welcoming and open to talking to me about my interests and providing guidance."

For more details on the cost of attending Rollins, visit sph.emory.edu/financialguide.

FINANCIAL AID

COST IS NOT A BARRIER TO ATTENDING ROLLINS.

The school offers students multiple options to make the cost of a public health education affordable. Including, but not limited to the following scholarships:

MERIT AWARDS AND SCHOLARSHIPS. Applications completed and verified in SOPHAS by the January priority deadline are automatically considered for a Rollins merit award. In general, merit scholars receive anywhere from 40 percent to 100 percent of tuition, plus a Rollins Earn and Learn (REAL) award. The James W. Curran and Robert W. Woodruff Scholarships are the largest and most prestigious awards offered and include full tuition, a stipend, a \$2,000 applied practice experience award, and a \$10,000 REAL award.

MISSION-DRIVEN AID. Rollins offers mission-driven awards to all students who meet the required criteria, be it service in PeaceCorps, Teach for America, AmeriCorps, the Yellow Ribbon Program, or a dual degree student within the health sciences. Some awards are granted on a first-come, first-serve basis. We invite you to more fully explore these awards and criteria on our website.

INSTITUTIONAL AWARDS. Many of our students are eligible for need-based assistance. These institutional-funded grants range from \$4,000 to \$20,000 and are gifted on a first-come, first-serve basis according to the completion date of the FAFSA. It is important to ensure that the FAFSA is completed and at Emory well in advance of the March 1 financial aid deadline to increase your chances of receiving one of these awards. The FAFSA will be available October 1 for completion.

 Visit sph.emory.edu/tuition to learn more about Rollins financial aid options.

EXTERNAL SCHOLARSHIP OPPORTUNITIES. The Association of Schools and Programs of Public Health has developed a list of scholarship and fellowship opportunities specifically for public health students. We encourage you to search aspph.org/study/financing-your-degree/ and aspph.org/study/fellowships-and-internships/ to explore these opportunities.

Reference the **Rollins Life: A Cost of Living Guide** for more information about scholarships, other funding opportunities, and to hear from Rollins students about how they afford graduate school. Visit sph.emory.edu/financialguide to download the guide.

WE WANT TO HEAR FROM YOU!

CONTACT US.

(e) sphadmissions@emory.edu
(p) 404-727-3956

Rollins School of Public Health
Emory University
Office of Admission and Student Services
1518 Clifton Road, NE, 1st Floor
Mailstop 1518-002-1AA
Atlanta, GA 30322

sph.emory.edu

Emory University is an equal opportunity/equal access/affirmative action employer fully committed to achieving a diverse workforce and complies with all applicable federal and Georgia state laws, regulations, and executive orders regarding nondiscrimination and affirmative action in its programs and activities. Emory University does not discriminate on the basis of race, color, religion, ethnic or national origin, gender, genetic information, age, disability, sexual orientation, gender identity, gender expression, and veteran's status. Inquiries should be directed to the Office of Equity and Inclusion, 201 Dowman Drive, Administration Bldg, Atlanta, GA 30322. Telephone: 404-727-9867 (V) | 404-712-2049 (TDD). Should you need this document in an alternate format, or require a reasonable accommodation, please contact the Office of Accessibility Services at 404-727-9877 (V) | 404-712-2049 (TDD). Please note that one week advance notice is preferred.

Emory University is accredited by the Southern Association of Colleges and Schools Commission on Colleges to award associate, baccalaureate, master's, doctorate, and professional degrees. Contact the Commission on Colleges at 1866 Southern Lane, Decatur, Georgia 30033-4097, call 404-679-4500, or visit the web at www.sacscoc.org for questions about the accreditation of Emory.

© Rollins School of Public Health, Emory University

WHY ROLLINS?

TOP FIVE. *U.S. News & World Report* ranks the Rollins School of Public Health #5 among 177 accredited schools and programs of public health in the United States.

INTERNATIONALLY RENOWNED RESEARCH.

Rollins is home to 24 centers for innovative research and training.

CAREER LAUNCHING. Nearly 90 percent of students find jobs or continue their education within 12 months of graduation.

PROMINENT FACULTY. Rollins' dean, James W. Curran is a global pioneer in HIV/AIDS prevention and research, and more than 20 faculty hold endowed chairs thanks to generous donors.

COLLABORATIVE CULTURE. World-class faculty involve students in research in areas such as HIV/AIDS, diabetes, cancer, water and sanitation, the environment, reproductive health, emergency preparedness, health reform, and mental health.

ALUMNI NETWORK ACCESS. Nearly 10,000 alumni live in all 50 states and more than 90 countries.

REAL WORLD EXPERIENCES. Students build their careers from the get-go through a dynamic career services program, on-campus job recruitment, paid work opportunities at major health organizations, internships, and global field experiences.

SCHOLARSHIP OPPORTUNITIES. More than 40 merit scholarships are awarded annually and three endowments fund Global Field Experiences for some 70 students annually.

PUBLIC HEALTH HUB. Rollins is within close proximity to top health organizations such as the CDC, CARE, The Carter Center, the American Cancer Society, the Task Force for Global Health, and county and state public health agencies.

ENGAGING STUDENT LIFE. Rollins offers an environment of diversity and inclusion with 18 student organizations and programs dedicated to connecting students with resources, the community, and each other.

START YOUR JOURNEY AT ROLLINS!

APPLY AT [SPH.EMORY.EDU](https://sph.emory.edu)