

**OUR MISSION** | The Hubert Department of Global Health seeks to improve health services and delivery systems around the world through innovative research, excellence in teaching, and engaged service.



## APPLY

[SPH.EMORY.EDU/ADMISSIONS/](https://sph.emory.edu/admissions/)

### ADMISSIONS REQUIREMENTS

We are seeking applicants who have a passion for global public health and the aptitude to excel in our program. Preference is given to students who have experience working or volunteering in the global arena. This may include working with under-served populations, volunteer or mission experience, Peace Corps or AmeriCorps service.

### FUNDING

Rollins offers scholarships, financial aid awards, and work-study that allow graduate students to support their academic interests with applied public health experience through the Rollins Earn and Learn (REAL) Program. In fact, more than 500 Rollins students take advantage of the paid work opportunities available through REAL each year.

[sph.emory.edu/admissions/tuition/ways-to-pay/](https://sph.emory.edu/admissions/tuition/ways-to-pay/)

### CONTACT AN ACADEMIC ADVISOR

Feel free to reach out to a Global Health Advisor for further information.

**Theresa Nash,**  
Associate Director of Academic Programs,  
[tnash@emory.edu](mailto:tnash@emory.edu)

**Flavia Traven,**  
Assistant Director of Academic Programs,  
[ftraven@emory.edu](mailto:ftraven@emory.edu)



HUBERT DEPARTMENT OF GLOBAL HEALTH | [SPH.EMORY.EDU/GH](https://sph.emory.edu/gh)



*Go Global*





## TAKE ON GLOBAL HEALTH CHALLENGES OF THE FUTURE

The Master of Public Health (MPH) degree in Global Health provides students with applied public health training in a global context. This program is offered in both a traditional, 24-month format and an accelerated, 12-month format.

### CONCENTRATIONS

Students specialize in one of four subject areas to advance their global careers:

- Community Health Development
- Infectious Disease
- Public Health Nutrition
- Sexual and Reproductive Health and Population Studies

### GAIN CRITICAL SKILLS IN

- ✓ Quantitative and Qualitative Research
- ✓ Monitoring and Evaluation
- ✓ Survey Research Design
- ✓ Public Health Surveillance
- ✓ Global Program Management
- ✓ Knowledge Translation
- ✓ Scientific Writing
- ✓ Applied Laboratory Skills
- ✓ Transforming Communities
- ✓ Global Health Ethics

### CUSTOMIZE YOUR PROGRAM

Further specialize your education by completing a Rollins certificate in:

- Complex Humanitarian Emergencies
- Health and Human Rights
- Injury & Violence Prevention
- Maternal and Child Health
- Mental Health
- Religion and Health
- Socio-Contextual Determinants of Health
- Water, Sanitation, and Hygiene



## GAIN HANDS-ON EXPERIENCE

### PRACTICUM PROJECTS

Students apply for school-based funding to support practicum projects, such as:

- HIV screening in Haitian prisons
- Indian NGO health systems strengthening and policy work
- Micronutrients and WFP evaluation in Uganda
- Urban flooding and WASH practices in Dhaka city slums
- Service provision for female sex workers in Rwanda
- Evaluating the Kingdom of Saudi Arabia's national diabetes guidelines
- GPS technology and the relationship between mobility and malaria outbreaks in rural Peru



### UNPARALLELED ACCESS

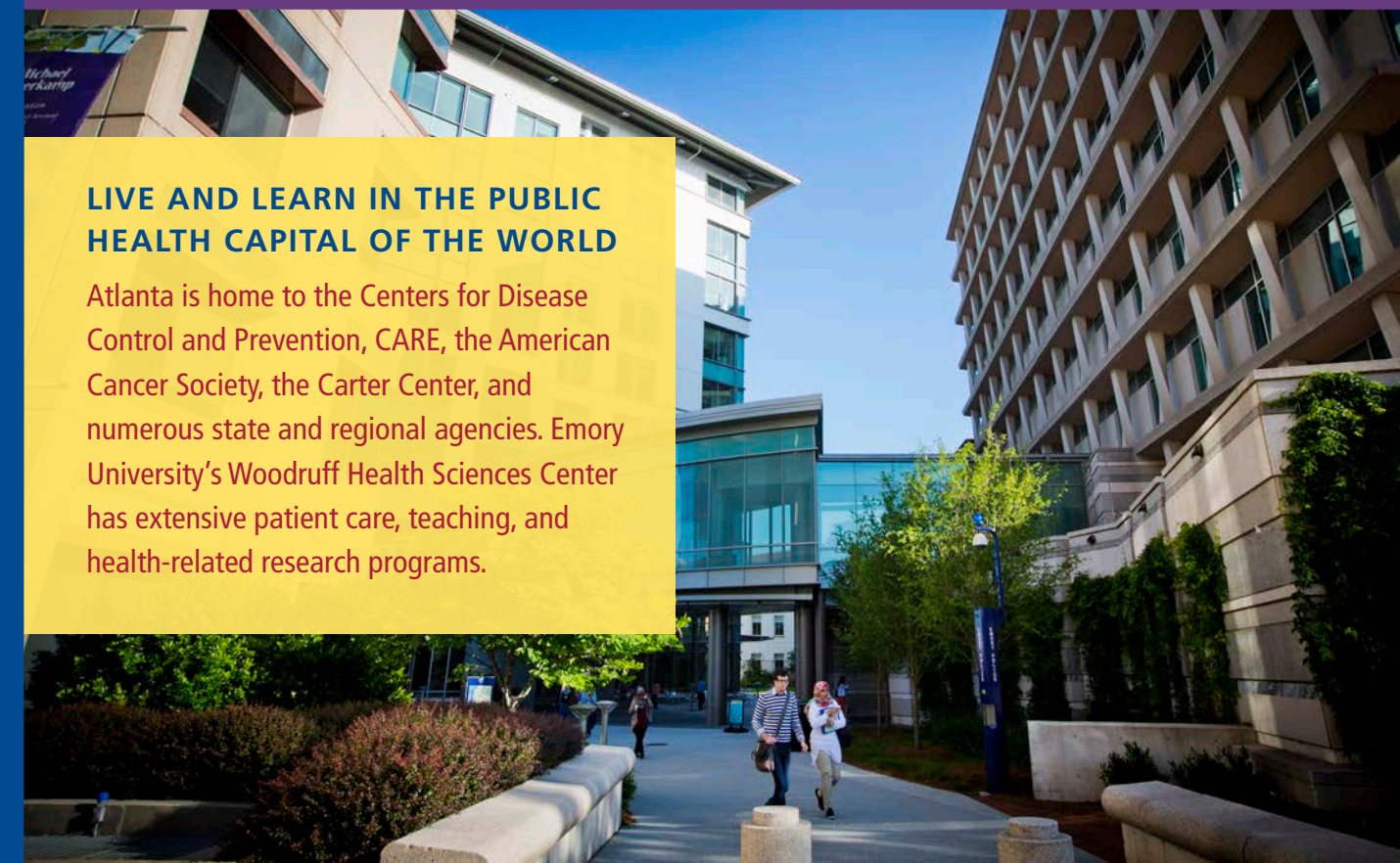
Our students work with some of the most respected public health organizations during, and after our program including:

- Centers for Disease Control and Prevention
- CARE
- World Health Organization
- The Carter Center
- John Snow, Inc.
- Save the Children
- Local, state, and national health departments

### GET INVOLVED IN OUR RESEARCH

Work with our world-renowned faculty on projects that span the globe, including:

- HIV/AIDS
- Sexual and reproductive health
- Maternal and child nutrition
- Vaccine preventable disease
- Chronic diseases
- Humanitarian emergency response
- Access to safe water, sanitation, and hygiene



### LIVE AND LEARN IN THE PUBLIC HEALTH CAPITAL OF THE WORLD

Atlanta is home to the Centers for Disease Control and Prevention, CARE, the American Cancer Society, the Carter Center, and numerous state and regional agencies. Emory University's Woodruff Health Sciences Center has extensive patient care, teaching, and health-related research programs.

## EXCELLENCE IN RESEARCH